

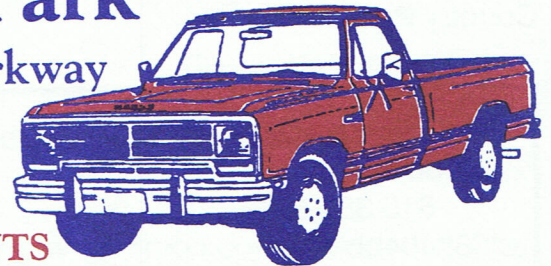
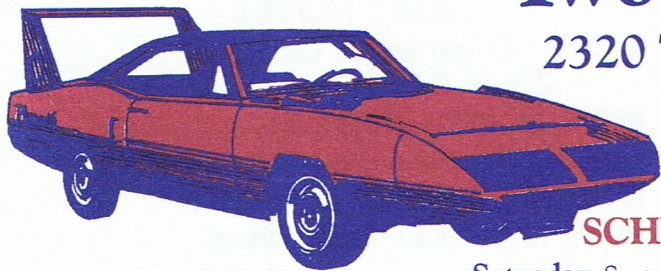
# Music City Mopar Club

## 14th ANNUAL CAR & TRUCK SHOW

### Saturday, September 27, 2003

#### One Day Only Two Rivers Park

2320 Two Rivers Parkway  
Nashville, TN



#### SCHEDULE OF EVENTS

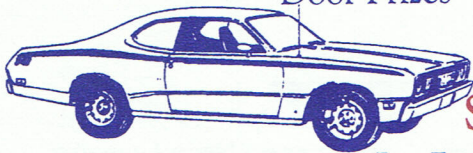
Saturday, September 27th: Registration: 8:00 AM til Noon

Car Show starting at 8:00 AM, Judging starts at 10:00 AM

For info call: Robert Vachunek @ 615 384-8243 or Bill Bradley @ 615 443-4767

**RAIN or SHINE** - Admission is FREE to Public

Door Prizes • 50/50 Drawing • Swap Meet • Live DeeJay



#### Save Money and Pre-Register

Pre-Entry Fee: \$15 • Day of Show: \$20 • Car Corral: \$10

Vendors: 20x10 Space: \$10 • 20x20 Space: \$15 • 20x30 Space: \$20 • 20x40 Space: \$25

FREE T-Shirts to First 50 Pre-Entries

Return this Entry Form with Entry Fee to:  
**MUSIC CITY MOPAR CLUB**  
P.O. Box 625  
Madison, TN 37116-0625

Vendor: \_\_\_\_\_

Size Space Needed: \_\_\_\_\_ (Vendors must supply own electricity if needed)

Name: \_\_\_\_\_ Age: \_\_\_\_\_ T-Shirt Size: \_\_\_\_\_

Address: \_\_\_\_\_ City: \_\_\_\_\_ State: \_\_\_\_\_ Zip: \_\_\_\_\_

Car Make: \_\_\_\_\_ Model: \_\_\_\_\_ Year: \_\_\_\_\_

Class Entered: \_\_\_\_\_ Miles Driven to Show: \_\_\_\_\_

LIABILITY: By entering this show and completing the entry form, I understand the MUSIC CITY MOPAR CLUB and TWO RIVERS PARK will not be liable or responsible for damage, theft, loss of life, or accidents to and from the show and during the day-long event. Alcoholic beverage will not be allowed in or around the show area. (Reckless driving will not be tolerated.) The Music City Mopar Club reserves the right to evict violators of the above rules. I HAVE READ THE RULES AND REGULATIONS AND AGREE TO ABIDE BY THE REQUIREMENTS.

Signature \_\_\_\_\_ Date: \_\_\_\_\_

(If under 18 years of age, parent or guardian must sign).

# HALLMARK DODGE

**"EXPECT THE BEST"**

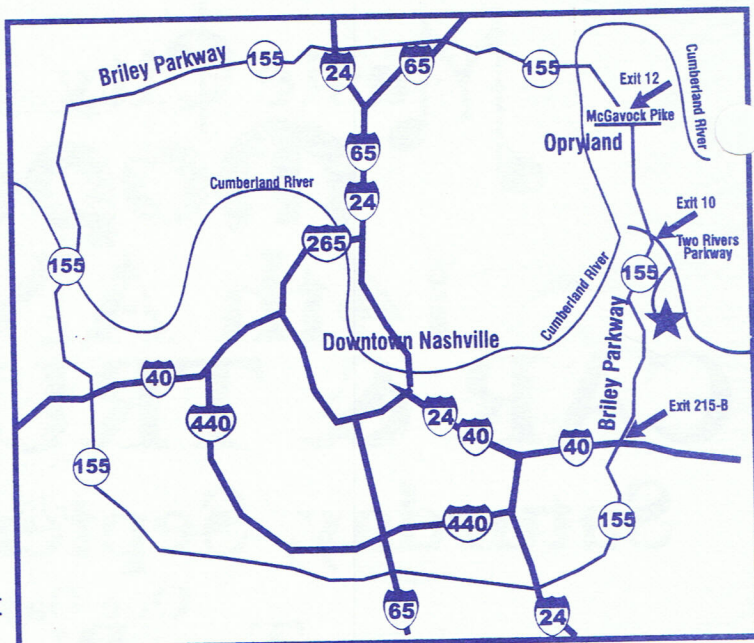
SALES • SERVICE • LEASING

5800 Crossings Blvd., Nashville, TN 37013

**615 941-3200**

### Directions to Show

From Nashville take I-40 East to Briley Parkway (Exit 215-B). Go North to Two Rivers Parkway (Exit 10). Go East on Two Rivers Parkway turn at First Drive on Right. Show site is behind Wave Country Pool.



### HOST HOTEL

#### AmeriSuites Opryland

220 Rudy's Circle - Nashville

\$69 + tax for 1 - 5 persons, includes Bountiful Breakfast Buffet Call 1-615-872-0422 and mention Music City Mopar Club's show.

### Directions to Hotel

Same as show except exit Briley Parkway at McGavock Pike (exit 12). Go west and turn right on Music Valley Dr. Go 1/4 mile and turn left onto Rudy's Circle.

*For More Information Contact:*

**Robert Vachunek**

615 384-8243

val683404bbl@yahoo.com

**Keith Pettit**

615 325-2899

moparkiss@msn.com



**Wayne Hall**

615 444-1521

wayne.hall@state.tn.us

**Bill Bradley**

615 443-4767

rb446wedge@aol.com

## SHOW CLASSES

### STOCK CLASSES

1. 63 - 69 ..... A-Body
2. 70 & up ..... A-Body
3. 62 - 67 ..... B-Body
4. 68 - 70 ..... B-Body
5. 71 & up ..... B-Body
6. ALL ..... E-Body
7. 72 - 93 ..... Trucks
8. 94 & up ..... Trucks
9. Wing Cars
10. Original (unrestored)\*
11. C-Body / 300's
12. 62 - 71 Trucks
13. "Lil" Red Express & Warlocks
14. 62 & Older Antique Cars
15. 61 & Older Antique Trucks
16. F-Body / RW Drive\*\*
17. Front Wheel Drive\*\*
18. Viper & Prowler

\*Class Requirements: 1978 or older, 90% of original paint, only general maintenance.

\*\*Class Requirements: 1998 or older to enter this class.

\*\*\*This class is for stock or modified vehicles.

### SPECIAL AWARDS

Best of Show - Stock • Best of Show - Modified • Best of Show - Truck  
Club Participation and Participants Choice

2 - Judges' Choice Trophies

6 - Awards of Excellence Trophies (sponsored by Stephens Performance)

2 - Longest Distance Awards - Trailered / Driven

Classes may be altered slightly Day of Show

Classes with 10 or more will be split

### MODIFIED CLASSES

19. PT Cruisers
20. 63 - 69 ..... A-Body
21. 70 & Up ..... A-Body
22. 62 - 67 ..... B-Body
23. 68 - 70 ..... B-Body
24. 71 & Up ..... B-Body
25. All ..... E-Body
26. 72 - 93 ..... Trucks
27. 94 & Up Trucks
28. Stratus / Neon / Avenger
29. Lasor / Talon
30. Pro-Street / Street Rods
31. Race Cars
32. Special Interest\*\*\*

Dash Plaques to All Entries

1st, 2nd, & 3rd Place Awards in All Classes

--All Vehicles MUST be MOPAR Powered--

### Chrysler Model Contest

2 Classes - No Entry Fee

Ages 10 & Under

Ages 11 - 15