

# Music City Mopar Club

AUGUST

1998

Monthly Feature

## ***MEMBER'S MOPARS***



### ***“A Van of Many Colors”!***

Al Price is the owner of this 1988 Plymouth Voyager. The exterior is custom painted with purple, yellow, and blue metallic on white. It has a custom interior that is also four colors.

It's presently powered by a 2.5 liter engine, but is awaiting transplant of a 2.5 liter turbo. It's used in Al's business (Upholstery Concepts) as a pickup and delivery van. When the new motor is installed it should make those trips a lot quicker. The van also

has dual exhaust, CB radio, Recard seats, fender flares, rear spoiler and Viper RWL tires.

The van has been entered in three shows and has won (1) 2<sup>nd</sup> place and (2) 3<sup>rd</sup> place trophies. If you pick up a copy of the August issue of Stock Car Racing magazine, and look on page forty-two, you will see a nice picture of old No. 77. It's great to see Mopar's in something besides Mopar Magazines.

Allan Price  
Gallatin, TN

# “Car/Truck Of The Month” We Want Your Car/Truck!!!

The Music City Mopar Club wants to **feature your vehicle** in a future newsletter. To do so, we obviously need some information (a Hemi crank fell on our crystal ball!!). We know there are many MCMC members out there who are very proud of their vehicles and want to tell the world about it. You may think this a good idea but you are shy about your writing talents. Initial comments we have heard is that people have no difficulty talking about their “rides” but writing is not always your strong point. This is where MCMC newsletter editors can offer some assistance.

While we would certainly prefer that you write the article in your own words, we have put together the enclosed questionnaire to get you/us started on an article. This asks some of the basic questions concerning your vehicle. If you are a proud or your vehicle as we think your are, fill out the questionnaire and we will try to help with the rest. Remember we also need **sharp** color or black & white pictures!

Fill out the enclosed information and return it to the MCMC at P.O. Box 625, Madison, TN 37116. If necessary, someone from the newsletter staff will contact you for additional details and we will do our best to assemble an article that will do your car/truck justice.

**Owner:** \_\_\_\_\_ **Phone:** \_\_\_\_\_

**Make:** \_\_\_\_\_ **Model:** \_\_\_\_\_ **Year:** \_\_\_\_\_

**Engine:** \_\_\_\_\_ **Transmission:** \_\_\_\_\_ **Rear End:** \_\_\_\_\_

**Color Exterior:** \_\_\_\_\_ **Interior:** \_\_\_\_\_

**Significant Options:**

**Special Features:**

**History(humorous or not)**

(attach Additional Pages if Necessary)

The Special Features should include any information such as unique engine or drivetrain components or unique body or interior features.

The History section should be used to talk about the background (always a Sunday driver, etc.) or information covering the pain & pleasure of a restoration.

To do this type of feature we need your assistance ( and **pictures**). **Help us out!**

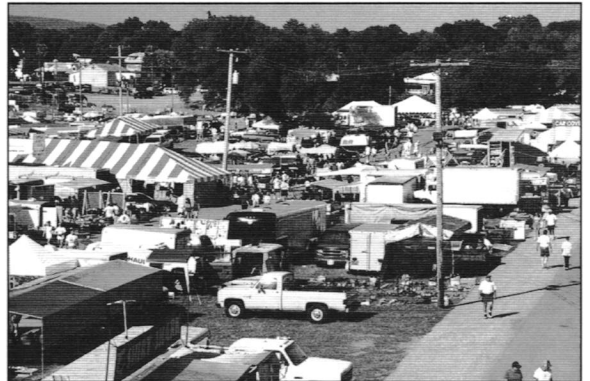
## Chrysler's At Carlisle

This year being the 25<sup>th</sup> anniversary of the 1973 model year, I decided that I would take the car to a few of the bigger shows. Well, they don't get much bigger than this! We left the house on Wednesday, July 8<sup>th</sup> and 700 miles later we arrived at the Carlisle Fairgrounds.

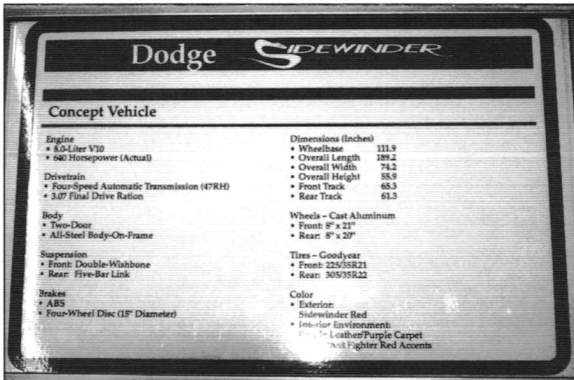
My car and several other cars were in the Chrysler Invitational. The cars were roped off and parked inside. This was great because we did not have to sit with the car and we were free to go do whatever we wanted to. This show is not as big as the National's, but it seemed to be better organized, and a lot more relaxed. Here are a few pictures that I took.



"A Nice Place To Park"



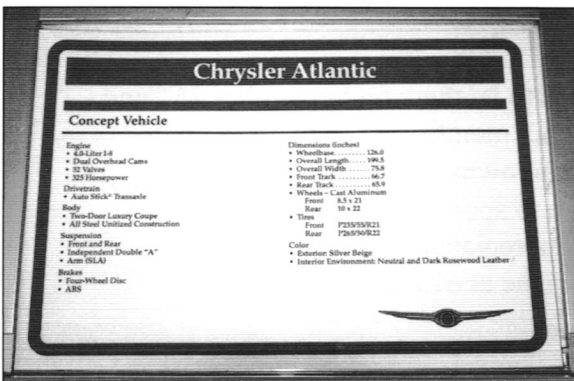
"There Were Plenty Of Parts"



"Concept Vehicle"



"Dodge Sidewinder"



"Concept Vehicle"



"Chrysler Atlantic"



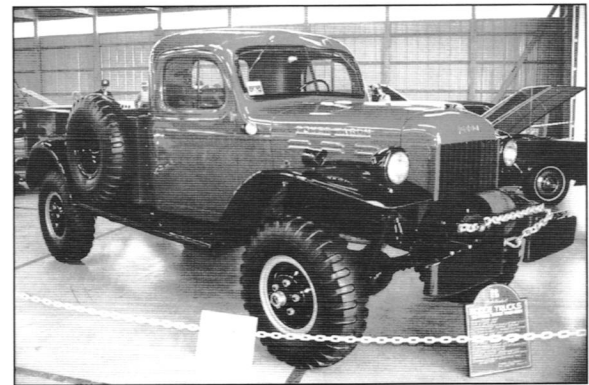
**"The Fun Field"**



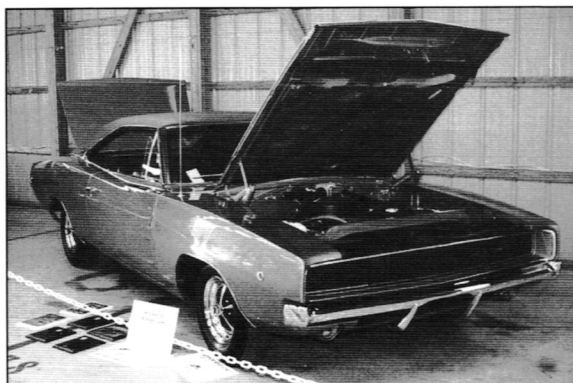
**"This One Comes To Our Show"**



**"How About A Wheelstand"**



**"Super Nice Truck"**



**"Nice Car"**



**"Nice Car"**

Our show will be here before you know it, so make plans to be there on September 26<sup>th</sup> and 27<sup>th</sup>. We are selling class sponsors, which are \$75. Any club member is welcome to invite businesses to sponsor our club. If you know of someone who owns a business or if you have just been a consumer at a certain business for a while, ask them to sponsor our club. If \$75 is too much, ask them about donating a door prize. Anything is appreciated greatly. We need volunteer workers for the show. If interested please contact me at 615-444-1521.

Wayne Hall  
V. P.

# TECH TALK

WE HAVE SPENT A LOT OF TIME TALKING ABOUT CAMSHAFTS IN TECH TALK THIS YEAR. I HAVE BEEN AN ADVOCATE OF HIGH LIFT, SHORT DURATION, QUICK RAMP SPEED CAMS FOR STREET CARS. BECAUSE THEY BRING IN MORE AIR/FUEL ON THE INTAKE STROKE WITH NO OR LITTLE EXHAUST VALVE OVERLAP THEY HELP THE ENGINE MIMIC A HIGHER COMPRESSION ENGINE. FOR A LOT OF LATE MODEL ENGINES THIS IS GOOD BECAUSE THEY ARE DOWN ON COMPRESSION. FOR OLDER ENGINES THAT HAVE TOO MUCH COMPRESSION A LONG DURATION CAM CAN ALSO HELP FILL THE CYLINDERS WHILE BLEEDING OFF EXCESS CHARGE THROUGH THE OVERLAP IN VALVE OPENINGS. THIS HELPS IT MIMIC A LOWER COMPRESSION ENGINE. OBVIOUSLY THE ABILITY OF THE CAM, INTAKE, HEADS, AND CARB TO FILL THE CYLINDERS CAN ACT TO CHANGE CYLINDER PRESSURE OR THE EFFECTIVE COMPRESSION RATIO. THIS IS NOT THE SAME AS STATIC RATIO WHICH IS SIMPLY A COMPARISON OF THE TOTAL VOLUME OF THE COMBUSTION CHAMBER AT BOTTOM DEAD CENTER VERSUS TOP DEAD CENTER. USING DIFFERENT PISTONS, RODS, CRANKS, HEADS, AND GASKETS CAN CHANGE THE STATIC RATIO. THIS GIVES YOU A KNOWN NUMBER BY USING A LONG, BUT SIMPLE MATHEMATICAL FORMULA:

$$\frac{V1 + V2 + V3 + V4}{V2 + V3 + V4} = \text{COMPRESSION} : 1$$

$$= \text{COMPRESSION} : 1$$

V1 = SWEEPED VOLUME V2 = UNSWEEPED VOLUME

V3 = GASKET VOLUME V4 = HEAD VOLUME

ONCE THIS IS SET IT WILL NOT CHANGE, ALTHOUGH OVER TIME CARBON BUILD UP CAN EFFECT IT. SO WHAT IS THE POINT TO ALL OF THIS? WE KNOW HIGH COMPRESSION MAKES MORE POWER, AND THAT LOW COMPRESSION MAKES A MORE RELIABLE, ECONOMICAL, STREETABLE ENGINE. WHAT DO WE WANT? AS MUCH OF BOTH AS POSSIBLE. WELL LETS GO BACK TO OUR 318 OF THE PAST. IF YOU HAVE EVER TRIED TO BUY HIPO PARTS FOR A SMALL BLOCK MOPAR YOU KNOW IT CAN BE FRUSTRATING TO GET MID RANGE PARTS. IT SEEMS THEY WANT YOU TO HAVE 9:1 OR 12:1, BUT THE HAPPY MEDIUM DOES NOT EXIST. YOU CAN HAVE YOUR BLOCK DECKED OR YOUR HEADS SHAVED, BUT THAT ISN'T FREE AND CAN CAUSE OTHER MODS AND A NEED FOR OTHER PARTS. YOU WON'T EVEN BE ABLE TO FIND ONE OF THOSE NIFTY, THIN, STEEL SHIM HEAD GASKETS. SINCE YOU HAVE TO BUY A CAM ANYWAY I WOULD PICK ONE THAT WILL HELP YOU RAISE OR LOWER YOUR CYLINDER PRESSURE TO SUIT YOUR SITUATION. IT IS HARD TO GET A 12:1 MOTOR STREETABLE, BUT IT ISN'T HARD TO RACE A 9:1 MOTOR. GRAB ONE OF THOSE CAMS I LIKE AND YOUR THERE; A STREETABLE, RACEABLE, PUMP GAS BURNING BEAST THAT IDLES WELL, DOESN'T OVERHEAT AND WON'T DRIVE YOU NUTS. BUT WHAT IF THIS ISN'T THE WAY IT IS? WHAT IF YOU HAVE A 10.5:1

ENGINE AND EVERY PUMP GAS YOU HAVE TRIED IS PINGING LIKE A CORN POPPER? CHANGING YOUR TIMING OR ADVANCE CURVE CAN HELP. UNLESS YOU HAVE A LOW COMP ENGINE YOU COULD BE SUFFERING FROM PRE-IGNITION AND NOT KNOW IT. ANY MODS YOU DO CAN GET YOU IN THAT SITUATION QUICKLY. THERE ARE LOTS OF AFTER MARKET ADDITIVES TO HELP STOP KNOCK AS WELL AS SEVERAL RACE GASSES THAT WILL DO THE TRICK. MORE RACE GAS COMPANIES ARE OFFERING UNLEADED HIGH OCTANE FUEL IF YOU NEED TO STAY AWAY FORM LEAD. IN ANY CASE THIS CONSTANT ADJUSTING OF THE GASOLINE OCTANE IN YOUR TANK GETS TRICKY AS YOU MIX ONE GAS WITH ANOTHER AND THROW IN THE OCCASIONAL CAN OF WHAMMY. ADD TO THAT THE FACT THAT MOST OF US DON'T KNOW THE ACTUAL COMP RATIO OF OUR ENGINES AND A REAL PAIN IN THE NECK PRESENTS ITSELF. AND JUST IN CASE YOU DID DO THE MATH WHEN PUTTING YOUR ENGINE TOGETHER HOW DO YOU KNOW HOW MUCH CARBON HAS BUILT UP SINCE THEN. IT CAN EASILY ADD A HALF POINT TO THE RATIO. AND LASTLY IF YOU DID KNOW WHAT THE OCTANE IN THE TANK WAS AND WHAT THE COMPRESSION RATIO AND CYLINDER PRESSURES IN THE ENGINE WERE, HOW DO YOU KNOW HOW MUCH OCTANE IS NEEDED FOR WHAT LEVEL? KNOWING THE ENGINE'S SPECS IS UP TO YOU, BUT I DO HAVE A CHART THAT WILL HELP YOU PICK THE RIGHT OCTANE:

COMPRESSION RATIO MINIMUM OCTANE

|         |     |
|---------|-----|
| 12.00:1 | 100 |
| 11.50:1 | 98  |
| 11.00:1 | 97  |
| 10.50:1 | 95  |
| 10.00:1 | 94  |
| 9.50:1  | 92  |
| 9.00:1  | 90  |
| 8.50:1  | 88  |
| 8.00:1  | 87  |

WELL DOES IT SURPRISE YOU? WERE YOU JUST SURE THAT YOUR BIG BAD 10.5 :1 MOTOR NEEDED 100+ OCTANE TO SURVIVE? 95 OR 96 OCTANE WOULD DO, BUT WHERE DO YOU GO TO BUY IT. THEY JUST DON'T HAVE ANY DOWN AT THE MAPCO EXPRESS. WELL, YOU'RE RIGHT. WE'RE STUCK WITH PLAYING WITCH DOCTOR WITH OUR OWN HOME BREW FOR NOW. IF YOU KNOW OF A SIMPLE, CONSISTENT, ONE SHOT APPROACH TO 95 TO 100 OCTANE AT A REASONABLE PRICE AND AT AN EASY TO FIND LOCATION IN BOTH LEADED AND UNLEADED VERSIONS LET ME KNOW. I KNOW OF 110 LEADED, BUT AT \$3.50 A GALLON IT IS A BIT PRICY AND IS NOT AT EVERY STATION. MEAN WHILE IF YOU NEED HELP FIGURING OUT A HOME BREW FOR YOUR CAR USE THE CHART OR GIVE ME A CALL. I'M LOOKING FOR IDEAS.

BIG BLOCK BILL

## FYI

LAST MONTH'S MEETING WAS A GOOD TIME WITH LOTS OF TALL TALES AND BENCH RACING. THE RIVERSIDE PICNIC SITE WAS COOL AND COMFORTABLE AND THE FOOD TASTED GREAT.

NEXT MONTH WE WILL BE AT TWO RIVERS PARK ON 8/23/98 AT PICNIC AREA #5. ENTRY INTO THE PARK IS FREE, BUT THE WATER PARK IS EXTRA. THE CLUB FURNISHES THE BURGERS AND DOGS AT THE AUGUST MEETING EACH YEAR, BUT IT IS UP TO YOU FOLKS TO BRING THE SIDE DISHES AND DESERTS. AS USUAL THE GREET AND EAT STARTS AROUND 12:30 WITH THE OFFICIAL MEETING AT 2:00. THE TWO RIVERS PARK IS OFF BRILEY PARKWAY BETWEEN LEBANON RD. AND OPRYLAND. SEE YOU THERE.

## SPONSORSHIPS

AS THE CAR SHOW APPROACHES IT IS IMPORTANT TO SELL SPONSORSHIPS FOR EACH CLASS. THIS IS WHAT MAKES IT POSSIBLE TO HAVE SUCH A GREAT SHOW. EACH CLASS IS \$75.00. THAT MONEY BUYS 1ST, 2ND, AND 3RD PLACE TROPHIES AS WELL AS ONE YEAR'S ADVERTISING IN OUR NEWSLETTER. ALSO REMIND THEM THAT A VENDOR SPACE AT OUR TWO DAY SHOW IN THE TENNESSEE SPEED SPORT PARKING LOT IS ONLY \$10.00. EACH YEAR WE HAVE ABOUT 150 PARTICIPANTS AND HUNDREDS OF SPECTATORS.

## MOPARTS

**FOR SALE:** 1979 LIL RED EXPRESS. STARTED GROUND UP RESTO. NO TIME. \$4500 OBO 615-384-5683 MARK.

**FOR SALE:** 1967 BARRACUDA FAST BACK. 360 V-8, 727 A/T, 4.11:1 SURE GRIP, NEW FLOOR PAN & CARPET, ELECTRONIC IGNITION. \$3000 615-746-9510 LARRY.

**FOR SALE:** 1968 DART GT. GOOD BODY & FRONT END. 318, 904 A/T, W/TITLE. \$400 615-746-9510 LARRY.

**FOR SALE:** 1967 PLY BELVEDERE II. 4-DR, 318, A/T, PS, A/C, AM/FM. \$1500 OBO 615-274-6606 PHIL.

**FOR SALE:** 1964 PLY BARRACUDA. 273 COMANDO, 4-SPEED, VERY STOCK, NEEDS SOME WORK, DRIVE HOME. \$3500 615-851-4371 BUTCH.

**FOR SALE:** 1968 CARGER. 383-HP, LITE GREEN, A/T, PS, PB, A/C. \$1500 615-331-5081 MONICA.

**FOR SALE:** 440 TORKER II \$75, '84 8 1/4" COMPLETE REAR END \$50, 440 CI 4-BBL INTAKE \$25, HOLLEY 670 PROJECTION LIKE NEW \$300. CALL BILL 615-449-1260.

**FOR SALE:** 1970 DODGE CORONET 440 2DR HT. 318, A/T, A/C, PS. \$1800 JIM AFTER 3 PM 615-382-1366.

**FOR SALE:** 1970 AIR GRABBER HOOD FOR ROAD RUNNER. \$900 MIKE 615-382-2685

**FOR SALE:** 1974 PLY DUSTER 225 SLANT SIX, A/T, A/C, P/S, NEW TIRES, ORIGINAL SPARE, 45,000 MILES. \$2,500 CALL WAYNE 754-2861

**FOR SALES:** NEW BB ELEC INGNITION KIT \$125, SPACE SAVER SPARE F78X14 \$100, MP COMPUTER FOR 318-360 MAGNUM \$100. DAVID 502-475-4086

**WE NEED YOUR MOPARTS. PLEASE CALL THEM IN TO 615-449-1260 OR MAIL TO THE PO BOX BY 8/28/98.**

## WINNING WAYS

**CROSS PLAINS SHOW**  
GARY WILKERSON  
CRAIG SATTERFIELD  
NICK WILLMORE

**MUSIC CITY RACEWAY**  
BILL BRADLEY

## NEW MEMBERS

**107 ERICH SUNDE**  
2345 CALLIS RD  
LEBANON, TN. 37090  
615-443-4938

**109 DAVID HATELA**  
1605 NESBIT LANE  
MADISON, TN. 37115  
615-826-1341

**111 CHARLES TYROLT**  
R53 CHRISTMASVILLE RD.  
TRENTON, TN. 38382  
901-855-8069

**113 GREG TORRANCE**  
5510 COUNTRY DR. #1  
NASH., TN. 37210  
615-

**115 PAUL BENNER**  
3536 ANDERSON RD.  
NASH., TN. 37217  
615-400-4400

**108 GERALD DUMONT**  
1757 FREY FORD RD  
SPRINGFIELD, TN. 37172  
615-384-6592

**110 KEN MARTIN**  
726 BAXTER LANE  
BRENTWOOD, TN. 37027  
615-370-4761

**112 TIM CHILDERS**  
5244 RUSTIC WAY  
OLD HICKORY, TN. 37138  
615-758-7833

**114 DONALD GALLE**  
1533 JACOBS RD  
COLUMBIA, TN 38401  
931-381-2140

## UPCOMING EVENTS

**8/22/98:** TRI-CITY AREA ALL MOPAR SHOW. CALL RICHARD FOR INFO 423-743-4699.

**9/11-12-13/98:** SOUTHEASTERN MOPAR MEET. SHOW AND DRAG RACE. COMMERCE, GA. MIKE 800-556-2279

**9/12/98:** HOOSIER MOPARS 6TH ANNUAL DRIVE IN. VALPARAISO, IN CALL LARRY 219-988-2493

**9/12-13/98:** NORWALK CRYSLER CLASSIC SHOW, SWAP & DRAG @ NORWALK RACEWAY, OHIO 614-628-1181

**9/12-13/98:** MONSTER MOPAR WEEKEND @ GATEWAY INTERNATIONAL MADISON, IL 314-938-6629

**9/26-27/98:** MUSIC CITY MOPAR CLUB CAR SHOW. NASHVILLE, TN. 615-449-1260 615-382-1430.

**10/2-3-4/98:** SOUTHERN SURVIVAL SHOOTOUT @ MUSIC CITY RACE WAY. \$4400 IN FOOT BRAKE PAYOUTS. 615-876-0981 615-264-0375

**10/10-11/98:** 10TH LOWCOUNTRY MOPAR SHOW. CHARLESTON, S.C. CALL DAVE 843-851-1969

**10/17/98:** 10TH MOPARS IN MEMPHIS CAR SHOW. 901-757-7814

**MUSIC CITY MOPAR CLUB**  
**P.O. BOX 625**  
**MADISON, TN. 37116-0625**

**BILL BRADLEY: PRESIDENT 615-449-1260**  
**WAYNE HALL: VICE PRES. 615-444-1521**  
**ROBERT VACHUNEK: EVENTS 615-382-1430**  
**MIKE BOER: TREASURER 615-382-2685**