

Music City Mopar Club

JUNE

1998

Monthly Feature *MEMBER'S MOPARS*



This 1994 Dodge Ram 1500 V8 (5.2L) Magnum Pick-up truck was purchased in October 1993, by Craig and Suzy Satterfield.

One day while visiting Regent Dodge, just to look, OOH, AAH and kick some tires. The salesman showed us this recently arrived black, short bed truck covered with road dirt and cosmalene (a protective coating)

Shortly after the stock '94 Ram was brought home, many changes took place. First the windows were tinted, then new wheels and tires. A sunvisor and tonneau cover were installed. The first show that I entered was "Hunters Auto Expo. '95". The truck won first place in the class of current production. The show bug hit!!

Installation of the after market parts were done by the owner with help from friends. The truck now sports tinted windows, lund sunvisor, vent shades, GTS headlamp covers,

bug deflector, V-Tech taillight covers, cowl cover, street scene sport mirrors, fiberglass running boards with flares, Leer XL100 topper, progressive 16 X 8 rims, 245-70-16 Michelin tires, Bell tech, 2-4 drop kit, custom front bumper inserts and a Reese class 3 hitch. A Gaylord bed rug and sofa bed give the back of the truck all of the comforts of home.

The engine is stock except for a K & N air filter. The exhaust has duel 3" pipes with flow master mufflers and 3" X 20" chrome tips.

The show bug has taken over!!!

I look forward to meeting and showing with other club members in the future

Craig Satterfield
Madison, TN

“Car/Truck Of The Month”

We Want Your Car/Truck!!!

The Music City Mopar Club wants to **feature your vehicle** in a future newsletter. To do so, we obviously need some information (a Hemi crank fell on our crystal ball!!). We know there are many MCMC members out there who are very proud of their vehicles and want to tell the world about it. You may think this a good idea but you are shy about your writing talents. Initial comments we have heard is that people have no difficulty talking about their “rides” but writing is not always your strong point. This is where MCMC newsletter editors can offer some assistance.

While we would certainly prefer that you write the article in your own words, we have put together the enclosed questionnaire to get you/us started on an article. This asks some of the basic questions concerning your vehicle. If you are a proud or your vehicle as we think your are, fill out the questionnaire and we will try to help with the rest. Remember we also need **sharp** color or black & white pictures!

Fill out the enclosed information and return it to the MCMC at P.O. Box 625, Madison, TN 37116. If necessary, someone from the newsletter staff will contact you for additional details and we will do our best to assemble an article that will do you car/truck justice.

Owner: _____ **Phone:** _____

Make: _____ **Model:** _____ **Year:** _____

Engine: _____ **Transmission:** _____ **Rear End:** _____

Color Exterior: _____ **Interior:** _____

Significant Options:

Special Features:

History(humorous or not)

(attach Additional Pages if Necessary)

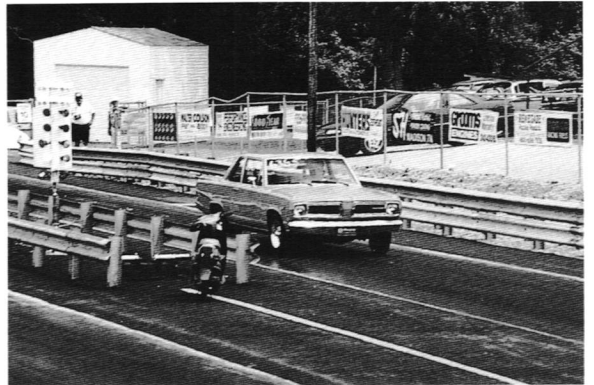
The Special Features should include any information such as unique engine or drivetrain components or unique body or interior features.

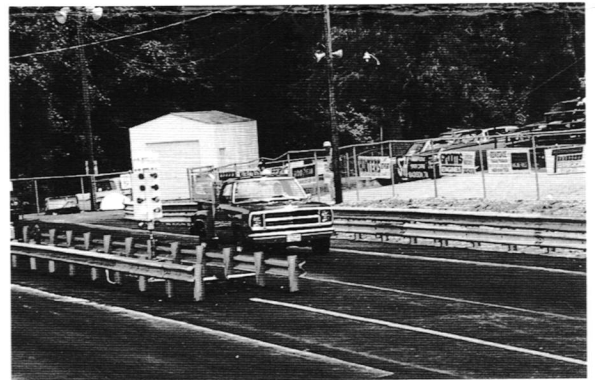
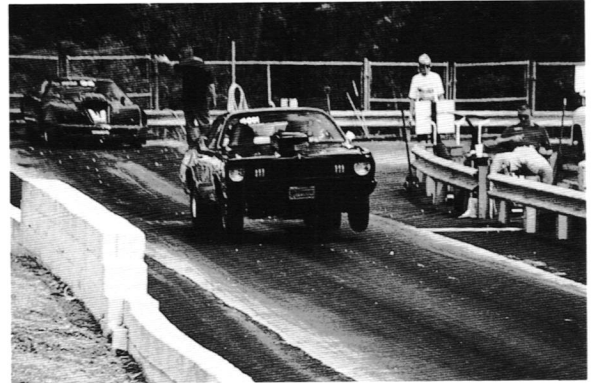
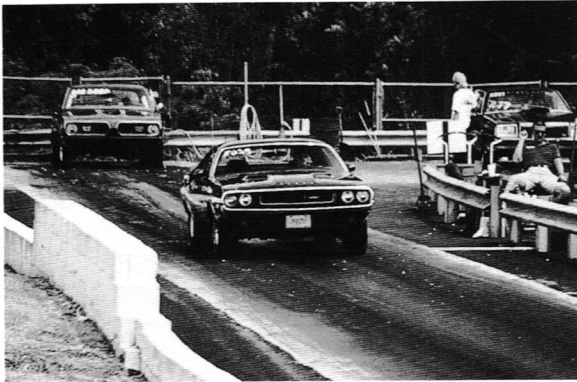
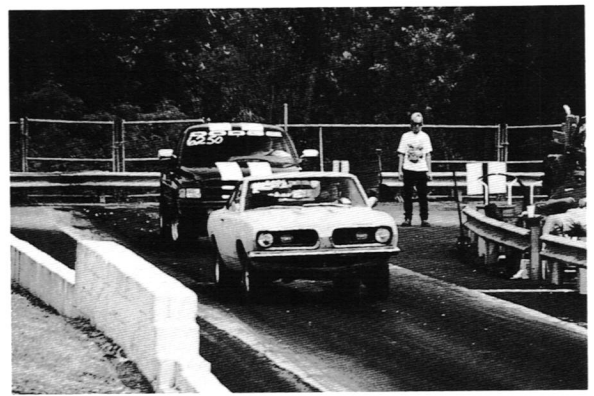
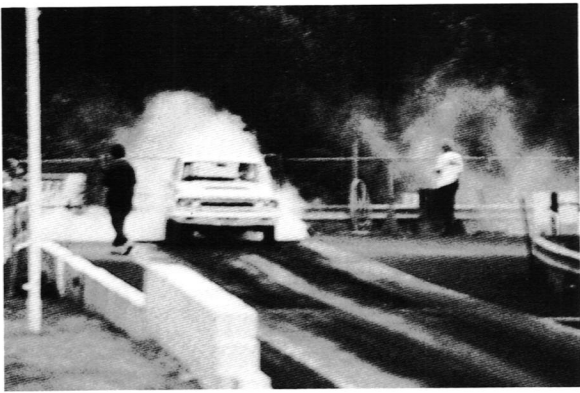
The History section should be used to talk about the background (always a Sunday driver, etc.) or information covering the pain & pleasure of a restoration.

To do this type of feature we need your assistance (and **pictures**). **Help us out!**

Drag Race Coverage

The Club's 3rd Annual Drag Race was held Sunday, May 24th. If you did not attend you missed some great racing. Below are a few pictures that I took of the action.





As you can tell, there were all types of cars at the event. Next year's race will probably be around the last weekend in April. Let's start making plans now! I plan on going to Chrysler's at Carlisle in July, so maybe I will have a few pictures from there.

Wayne Hall
V. P.

MOPARTS

FOR SALE: 1997 DODGE V-8 MAGNUM AND 4-SPEED AUTO W/ OD. 1700 MILES. COMPLETE W/ WIRE HARNESS, A/C COMPRESSOR, ALTERNATOR. \$2300 FIRM BUCK 423-986-1740

FOR SALE: 1969 PLY SATELLITE 2DR HT, 318, AUTO, PS, A/C, ONE OWNER, WHITE W/ BLACK INT, RALLY WHEELS, RWL TIRES, DUAL EXHAUST, NICE DRIVER FRED 901-644-3080

WANTED: HEADERS FOR W-2 HEADS, '68 AM/FM THUMBWHEEL, GOOD DASH PAD, NEAR NEW GOODYEAR WIDETREAD F70X14 OR G70X14 REDLINES, 2 WELD PRO DRAG STAR WHEELS 4 1/2" BOLT PATTERN 15"X12" OR 14" OR 15" WIDE. FRED 901-644-3080

FOR SALE: 1937 PLY 2DR COUPE, GOOD BODY, TUBE CHASSIS, RACK & PINION, 9" FORD NARROWED W/ STRANGE AXLES, COIL OVER 4-LINK, USE ANY ENGINE \$4000 615-885-5708

FOR SALE: '76 FURY 2DR, BODY ONLY \$200 CALL BILL 706-861-6496

WANTED: 4 CHRYSLER RALLYE WHEELS 15X6.5 CALL WAYNE 615-444-1521

FOR SALE: 440 RACE ENGINE. 13:1 COMPRESSION, COMP CAMS .650 LIFT / 34 DURATION SOLID LIFT CAM, 2.19 - 1.88 STAINLESS VALVES, ISKY ADJUSTABLE ROCKERS, CRANE PUSH RODS, WEIAND TEAM G INTAKE, ALUMINUM OIL PAN W/ SWINGING PICKUP AND DRAG LINK TUBE. \$3500. CALL BOBBY @ 615-226-6160 FOR INFO.

FOR SALE: 1969 SUPER BEE 383 4-SPEED CAR. BODY ONLY - NO MOTOR OR TRANS. FRESH AIR HOOD. \$500 BEEP CHUCK @ 615-702-6357.

FOR SALE: 8 3/4" CHUNK WITH 4.88 GEAR AND POS. \$375 BEEP CHUCK @ 702-6357.

FOR SALE: 1984 904 LOCK UP TRANS AND CONVERTER \$50. 1984 8 1/4" COMPLETE REAR END HOUSING WITH 3.23 GEAR AND DRUMS \$50. SMALL BLOCK C.I. 4 BBL INTAKE \$25. BIG BLOCK C.I. 4 BBL INTAKE \$25. BIG BLOCK ALUMINUM 4 BBL TORKER II INTAKE \$75. BIG BLOCK B-BODY C.I. EXHAUST MANIFOLDS \$10. BIG BLOCK SINGLE POINT DISTRIBUTOR \$10. ONE GOODYEAR WRANGLER A/T LT265/75R16, BRAND NEW FROM LATE MODEL 4X4 PICKUP TRUCK \$50. CALL BILL @ 615-449-1260.

FOR SALE: 1968 FORMULA S BARRACUDA, 383, FASTBACK, #'S MATCHING, NEEDS PAINT & INT., RUNNING-DRIVING CAR. \$6500 CALL RONNIE @ 615-444-3362

FOR SALE: 1967 D-100 FLAT BED W/ STAKES, 225 W/ COLUMN SHIFT, ALL ORIGINAL AND REBUILT, NEW TIRES & EXHAUST, OVER \$4000 INVESTED. ASKING \$2500. CARL @ 615-896-3599

FOR SALE: V-8 K-FRAME FOR EARLY A-BODY. \$75 CALL ROBERT @ 615-382-1430

EVERYTHING MUST GO! ALL MOPAR CARS, PARTS & COLLECTIBLES. 1967 MOD. VALIANT, 1965 BELVEDERE II, 1964 POLARA CONV'TIBLE. MANY PARTS. JERRY TAYLOR @ 615-449-3900.

FOR SALE: 1970 ROAD RUNNER W/ AIR GRABBER HOOD W/ ALL HARDWARE. \$1000 CALL MIKE @ 615-382-2685

FOR SALE: 1985 SHELBY CHARGER BODY W/ INT., NO DRIVE TRAIN, WOULD MAKE A GOOD RACE CAR. \$150 CALL ROBERT @ 615-382-1430

FOR SALE: 1986 D-100 225 RUNS AND DRIVES WELL. \$1750 CALL MIKE @ 615-382-2685

WANTED: 2 15X7" COP RALLYE WHEELS. CALL BILL @ 615-449-1260.

FOR SALE: 1979 LITTLE RED EXPRESS TRUCK. NICE, NICE. \$7250 CALL MIKE @ 615-382-2685

UPCOMING EVENTS

6/13-14/98: MOPAR WEEKEND AT GLEASON, TN. \$1000 PRO & \$500 SPORTSMAN. CAR SHOW AND SWAP MEET. FRED TURMAN @ 901-644-3080

6/13/98: ALL CHRYSLER SHOW CHARLOTTE NC 704-545-0414

6/13/98: ALL MOPAR SHOW @ GATEWAY INT'L RACEWAY MADISON, IL 618-594-2845

6/17-21/98: NATIONAL DAYTONA-SUPERBIRD MEET WEIRTON, WV 304-723-5522

6/20/98: SOUTHERN WHEELS 'N MOTION IN TULLAHOMA, TN. CALL JUSTIN 931-455-9952

6/20/98: AL MENAH SHRINE TEMPLE CAR SHOW. FOR INFO CALL 615-226-7766.

6/20/98: CHICAGOLAND MOPAR SHOOTOUT SHOW 7 RACE 314-938-6629 919-787-1551

6/27/98: KNOXVILLE, TN. FUN IN THE SUN MOPAR SHOW. 423-691-6002

7/10-12/98: CHRYSLERS AT CARLISLE, PA 717-234-7855

7/10-11/98: MOPAR MUSCLE SOUTHERN CLASSIC. ALSO KOS RACING @ MTN PKWY MOTORPLEX IN CLAY CITY, KY. 606-272-3520 423-323-5551 **NOTE NEW LOCATION AND DATE**

7/19/98: BELVEDERE, IL MOPAR SHOW BRUCE GRAHAM 630-369-1112

7/25/98: 7TH MID-OHIO ALL MOPAR SHOW WOOSTER OHIO DAVE 330-698-3612

8/6/98: CARAVAN TO BRICE ROAD AND MOPAR NATS GOES THRU NASHVILLE. IF YOU WOULD LIKE TO BE INVOLVED CONTACT:

MOPAR MUSCLE - RETURN TO BRICE RD 941-644-0449

OR: STAN HARDCASTLE 615-794-4204

8/7 -8/9/98 MOPAR NATS IN COLUMBUS OHIO. 313-278-2240.

8/22/98: TRI CITY AREA ALL MOPAR SHOW TRI-CITIES, TN 423-743-4699 RICHARD

9/12-13/98: NORWALK CHRYSLER CLASSIC SHOW-SWAP-DRAG NORWALK RACEWAY

9/12-13/98: MONSTER MOPAR WEEKEND @ GATEWAY INT'L MADISON, IL 314-938-6629

9/26-27/98: NASH., TN. MUSIC CITY MOPAR CLUB SHOW. 615-449-1260 615-382-1430

FYI

OK, WE'VE GOT ONE BIG EVENT BEHIND US. THE DRAG RACE HAS COME AND GONE AND WE SURVIVED. NO MOPAR RACE WINNERS THIS YEAR AS A VW BUGGY, A SATURN SEDAN, AND A MERCURY WAGON TOOK THE WINS. WE DID WIN THE MOPAR VS. FORD GRUDGE MATCH AS THE FORD CLUB HAD TO FORFEIT AND THE BURNOUT CONTEST WAS A LOCK WITH ONLY MOPAR CONTESTANTS BRAVE ENOUGH TO ENTER. THERE WERE A TOTAL OF \$2500 WORTH OF CASH PRIZES AND HOLLEY GIFT CERTIFICATES GIVEN OUT. WE HOPE YOU ALL HAD FUN. OUR NEXT CLUB EVENT IS ON SATURDAY, JUNE 27TH, AT THE BACKYARD BURGER CRUISE IN FRANKLIN, TN. GET OFF OF I-65 SOUTH AT HWY 96 AND GO WEST ONE BLOCK. LOOK FOR THE K-MART ON THE LEFT AND YOU ARE THERE. THE MEETING STARTS AT 4:00 P.M. AND YOU CAN EXPECT THE BULK OF THE CRUISERS TO START SHOWING UP SOON AFTER. WEEK AFTER WEEK THIS EVENT DRAGS IN HUNDREDS OF CARS AND THE MOPARS ARE GREATLY OUT NUMBERED. LETS SHOW UP SHINED UP AND READY TO GO.

WINNING WAYS

HENDERSONVILLE

GARY WILKERSON

NICK WILLMORE

AL & BETS BALK

JAMES SPEARS

ALEXANDER

NICK WILLMORE

DRAG RACE

MIKE BOER

ROBERT VACHUNEK

AMY ELMORE

TECH TALK

WHAT IS A GEAR RATIO OR RING & PINION? WHAT ABOUT A POS, SPOOL OR WELDED SPIDER? OR WHAT IS AN 8 3/4", DANA 60, BANJO HOUSING, OR 10 BOLT?

A PINION IS A SHORT SHAFT EXTENDING THROUGH THE FRONT OF THE AXLE HOUSING. IT HAS A SPLINED END THAT ACCEPTS THE YOKE AND U-JOINT THAT CONNECT TO THE DRIVE SHAFT. ON THE OTHER END IS A CURVED GEAR THAT MESHES WITH THE RING GEAR. THE RING GEAR IS ATTACHED TO A CARRIER THAT ACCEPTS THE AXLES. WHEN CHANGING GEAR RATIOS THE RING AND PINION MUST BE CHANGED TOGETHER. THEY ARE A MATCHED SET. THE RING GEARS FOR ONE TYPE HOUSING ARE ALWAYS THE SAME DIAMETER. RINGS WITH MORE TEETH ARE HIGHWAY GEARS AND RINGS WITH LESS TEETH ARE PULLING OR RACING GEARS. OTHER PARTS INSIDE ARE ONLY CHANGED WHEN BIG CHANGES ARE MADE. USUALLY PERFORMANCE CHANGES. MOTHER MOPAR USED TWO BASIC UNITS IN THE MUSCLE CAR ERA. ONE HAD A CAST CENTER SECTION AND AXLE TUBES, THE OTHER HAD A ONE PIECE CAST HOUSING/TUBE DESIGN THAT SOME CALL

A BANJO HOUSING. THE DIAMETER OF THE RING GEAR IS USUALLY THE WAY MOPAR REAR ENDS ARE DESIGNATED:

7 1/4" TUBE REAR ACCESS JUNK
8 1/4" TUBE REAR ACCESS 10 BOLT
8 3/4" BANJO FRONT ACCESS SPICER
9 1/4" TUBE REAR ACCESS BIG CAR
9 3/4" TUBE REAR ACCESS DANA 60

THE BANJO TYPE IS MORE LIKE A FORD 9" WHILE THE TUBE TYPE IS MORE LIKE THE DREADED CHEVY 10 OR 12 BOLT. THE LARGER THE DIAMETER THE STRONGER THE UNIT. THE HORSEPOWER WARS OF THE 60'S AND 70'S WERE REALLY TORQUE WARS. MOPAR TENDED TOWARDS THE SAFE SIDE SUPPLYING BIG UNITS ON PERFORMANCE CARS TO STOP TORQUE FROM CAUSING RING AND PINION CARNAGE. WHILE 7 1/4" UNITS SHOWED UP IN LOTS OF A-BODY OR SIX BANGER RIDES, THE SPICER MADE 8 3/4" BANJO UNIT MADE IT INTO MOST OF THE HOT APPLICATIONS WITH THE DANA MADE 9 3/4" "60" UNIT GETTING TOP BILLING IN THE MEGA TORQUE MODELS. LATER THE 8 1/4" AND 9 1/4" UNITS TOOK OVER AS THE MUSCLE CARS DIED AWAY. CHRYSLER USED SURE GRIPS OR LIMITED SLIP DIFFERENTIALS ON PERFORMANCE CARS TO GIVE BETTER TRACTION. THEY CAME IN CONE TYPES OR CLUTCH TYPES. ON NON-POS UNITS THERE ARE SPIDER GEARS IN THE CARRIER THAT ALLOW THE AXELS TO TURN AT DIFFERENT SPEEDS FOR A NICER RIDE. SOME RACERS WELD THESE TO CREATE A HOME MADE SOLID AXLE. IT IS AGAINST RACING BODY RULES AND WILL BREAK. IT IS ONLY A MATTER OF TIME. A MINI SPOOL CAN BE HAD THAT REPLACES THE SPIDER GEARS TO LOCK THE DIFFERENTIAL. THESE ARE USUALLY RACE LEGAL, BUT IN HIGH TORQUE APPLICATIONS CAN PUT A LOT OF STRESS ON A 25 OR 30 YEAR OLD CARRIER. THEN THERE IS A FULL SPOOL THAT REPLACES THE ENTIRE CARRIER AND LOCKS THE AXLES SOLID. THIS IS THE BEST WAY TO GO FOR RACING, BUT FOR ANYONE EXPECTING TO SEE A LOT OF ROAD MILES IT WILL WEAR YOUR TIRES, COULD BREAK AN AXLE, AND IS A NIGHTMARE IN BAD WEATHER. SOLID SETUPS ARE BEST LEFT TO PRO-STREETERS OR RACERS. NEW RING AND PINIONS CAN BE HAD FOR ABOUT \$200. NEW POS UNITS OR SPOOLS RUN ABOUT \$200. MINI SPOOLS CAN BE FOUND FOR ABOUT \$100. WE ARE LUCKY TO HAVE MANY CLUB MEMBERS QUALIFIED TO DO THIS KIND OF WORK AND IT IS EASILY DONE IN A DAY. IT COULD BE WHAT HELPS PUT ALL THAT POWER TO THE GROUND.

**MUSIC CITY MOPAR CLUB PO BOX 625
NASHVILLE, TN. 37116**

BILL BRADLEY	PRES.	615-449-1260
WAYNE HALL	V.P.	615-444-1521
ROBERT VACHUNEK	E.D.	615-382-1430
MIKE BOER	TRE.	615-382-2685